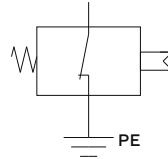
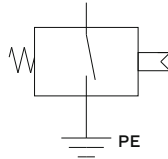


CONFIGURATION
NORMALLY CLOSED



CONFIGURATION
NORMALLY OPEN



Overpressure limit	Brass - Diaphragm Steel - Diaphragm	20 bar 20 bar	Operating temperature	* See the guide to selection of diaphragms / seals	Standard protection level	.F0 Faston Connection - IP00 * See the attachment caps and connectors
Working pressure	Brass - Diaphragm Steel - Diaphragm	10 bar 10 bar	Max Hysteresis	Diaphragm version 10% of full scale value		

Select specifications for product coding

1.	Setting Range	01 Diaphragm 0.2-0.5 Bar	02 Diaphragm 0.5-2 Bar	03 Diaphragm 2-4 Bar	04 Diaphragm 3-6 Bar	05 Diaphragm 5-8 Bar	
2.	Electrical Load						5 48V / 0,5A
3.	Electrical Condition					A Normally Open	C Normally Closed
4.	Housing Material					B Brass	Z Galvanized Steel
5.	Seals						N NBR
6.	Threads (X1)	20 M10x1 L1 10 mm	21 M10x1K L1 10 mm	23 M12x1.5 L1 12 mm	23A M12x1.75 L1 12 mm		
7.	Customizations * See the attachment caps and connectors					.F0 Faston Connection - IP00	.XX Customized product

PR3E

1.	2.	3.	4.	5.	6.	7.
----	----	----	----	----	----	----